

# PART CATALOGUE



GPX RACING *Gentleman* <sup>LEGEND</sup>

GPX Racing Gentleman 200 PART CATALOGUE @2018 by GPX Racing Malaysia (Bike Continent Sdn. Bhd.) 1st edition, November 2018. All right reserved.  
Any printing or unauthorized use without the written permission of GPX Racing Malaysia (Bike Continent Sdn. Bhd.) is expressly prohibited. Printed in Malaysia.

---

# Engine Parts







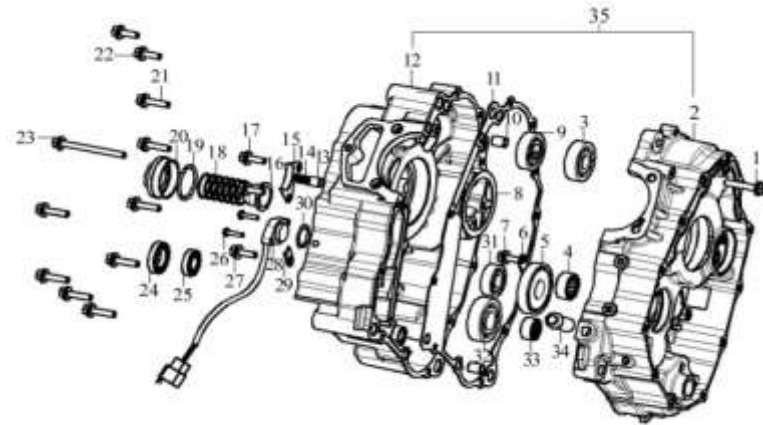




เครื่อง (CRANKCASE ASSY.)

GEN - 05

รูปภาพชิ้นส่วน



NO.	PART NO.	ENGLISH DESCRIPTION	Qty. (Piece)
1	GEN/CR5-05-01	BOLT,HEXAGON FLANGE	1
2	GEN/CR5-05-02	BODY SET,RIGHT CRANKCASE	1
3	GEN/CR5-05-03	BEARING	1
4	GEN/CR5-05-04	BEARING	1
5	GEN/CR5-05-05	BEARING	1
6	GEN/CR5-05-06	CHECK PLATE,MAINSHAFT BEARING	1
7	GEN/CR5-05-07	BOLT,HEXAGON FLANGE	1
8	GEN/CR5-05-08	GASKET,CRANKCASE	1
9	GEN/CR5-05-09	BEARING	1
10	GEN/CR5-05-10	PIN,DOWEL	2
11	GEN/CR5-05-11	GASKET,CRANKCASE	1
12	GEN/CR5-05-12	BODY SET,LEFT CRANKCASE	1
13	GEN/CR5-05-13	PRESSING PIN COMP.	1
14	GEN/CR5-05-14	SPRING,COMPRESSION	1
15	GEN/CR5-05-15	PLATE,TIMING CHAIN LIMIT	1
16	GEN/CR5-05-16	SCREEN,OIL STRAINER	1
17	GEN/CR5-05-17	BOLT,HEXAGON	2
18	GEN/CR5-05-18	SPRING,COMPRESSION	1
19	GEN/CR5-05-19	RING,SEAL	1
20	GEN/CR5-05-20	CAP,TAPPET ADJUSTING HOLE	1
21	GEN/CR5-05-21	BOLT,HEXAGON FLANGE	8
22	GEN/CR5-05-22	BOLT,HEXAGON FLANGE	2
23	GEN/CR5-05-23	BOLT,HEXAGON FLANGE	1
24	GEN/CR5-05-24	OIL SEAL	1
25	GEN/CR5-05-25	OIL SEAL	1
26	GEN/CR5-05-26	SCREW,CROSS RECESSED PAN HEAD	2
27	GEN/CR5-05-27	BOLT,HEXAGON	1
28	GEN/CR5-05-28	SWITCH COMP.,GEAR INDICATOR	1
29	GEN/CR5-05-29	DISC,TENSION	1
30	GEN/CR5-05-30	RING,SEAL	1



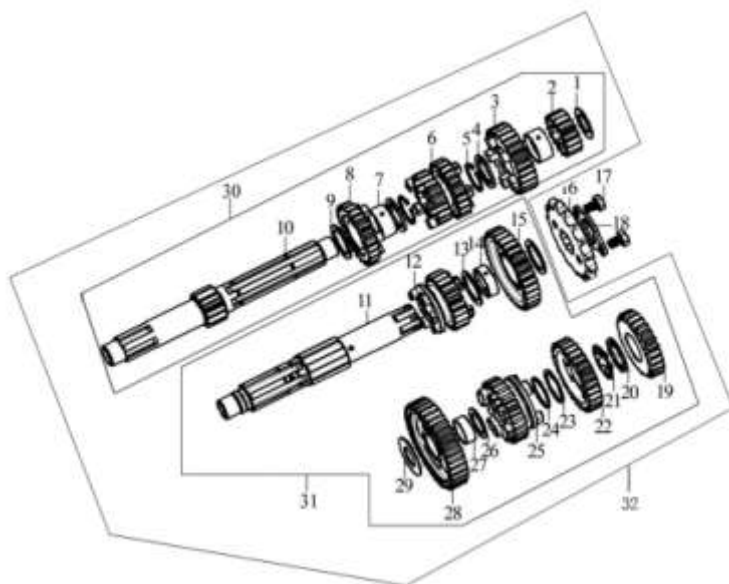




ส่งกำลัง, เฟลา (ACTUATING MECHANISM ASSY.)

GEN - 07

รูปภาพชิ้นส่วน



NO.	PART NO.	ENGLISH DESCRIPTION	Qty. (Piece)
1	GEN/CR5-07-01	CHECK RING,SHOULDER	1
2	GEN/CR5-07-02	GEAR,MAINSHAFT SECOND	1
3	GEN/CR5-07-03	GEAR,MAINSHAFT SIXTH	1
4	GEN/CR5-07-04	WASHER,SPLINE	2
5	GEN/CR5-07-05	CHECK RING,ELASTIC	2
6	GEN/CR5-07-06	GEAR,MAINSHAFT THIRD	1
7	GEN/CR5-07-07	COLLAR	2
8	GEN/CR5-07-08	GEAR,MAINSHAFT FIFTH	1
9	GEN/CR5-07-09	CHECK RING,SHOULDER	1
10	GEN/CR5-07-10	MAINSHAFT	1
11	GEN200-07-11	COUNTERSHAFT	1
12	GEN/CR5-07-12	GEAR,COUNTERSHAFT SIXTH	1
13	GEN/CR5-07-13	CHECK RING,SHOULDER	2
14	GEN/CR5-07-14	COLLAR	1
15	GEN/CR5-07-15	GEAR,COUNTERSHAFT SECOND	1
16	GEN/CR5-07-16	SPROCKET,COUNTERSHAFT DRIVING	1
17	GEN/CR5-07-17	BOLT,HEXAGON	1
18	GEN/CR5-07-18	PLATE,COUNTERSHAFT DRIVING SPROCKET FIXING	1
19	GEN/CR5-07-19	GEAR,COUNTERSHAFT FOURTH	1
20	GEN/CR5-07-20	WASHER,SPLINE	1
21	GEN/CR5-07-21	WASHER,SPLINE	1
22	GEN/CR5-07-22	GEAR,COUNTERSHAFT THIRD	1
23	GEN/CR5-07-23	BOLT,STUD STRUT	1
24	GEN/CR5-07-24	CHECK RING,ELASTIC	1
25	GEN/CR5-07-25	GEAR,COUNTERSHAFT FIFTH	1
26	GEN/CR5-07-26	CHECK RING,SHOULDER	1
27	GEN/CR5-07-27	COLLAR	1
28	GEN/CR5-07-28	GEAR,COUNTERSHAFT FIRST	1
29	GEN/CR5-07-29	CHECK RING,SHOULDER	1
30	GEN/CR5-07-30	MAINSHAFT COMP.	1

ส่งกำลัง, เฟลา (ACTUATING MECHANISM ASSY.)

GEN - 07

รูปภาพชิ้นส่วน

NO.

PART NO.

ENGLISH DESCRIPTION

Qty.  
(Piece)

31

GEN/CR5-07-31

COUNTERSHAFT COMP.

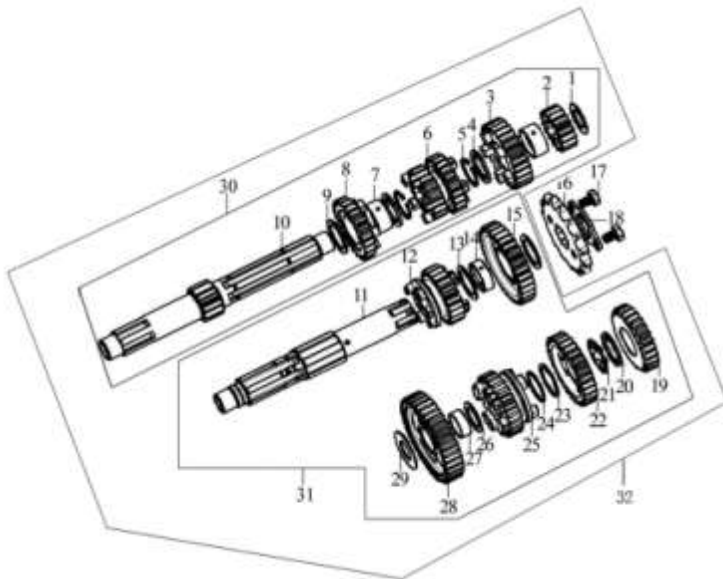
1

32

GEN/CR5-07-32

MAINSHAFT&COUNTERSHAFT KIT

1









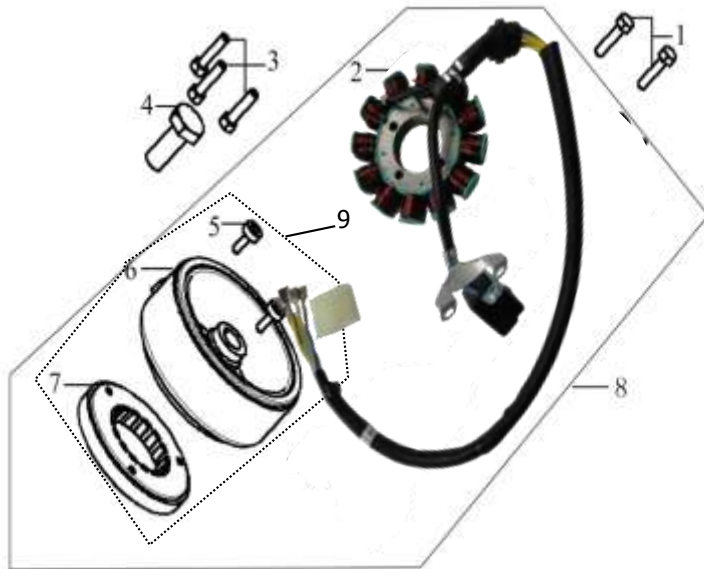




### ล้าแม่เหล็กและแม่กำเนิด (GENERATOR ASSY.)

GEN - 12

รูปภาพชิ้นส่วน



NO.	PART NO.	ENGLISH DESCRIPTION	Qty. (Piece)
1	GEN/CR5-12-01	BOLT,HEXAGON FLANGE	2
2	GEN/CR5/200-12-02	STATOR COMP.	1
3	GEN/CR5-12-03	BOLT,HEXAGON FLANGE	3
4	GEN/CR5-12-04	BOLT,HEXAGON FLANGE	1
5	GEN/CR5-12-05	SCREW,HEXAGON SOCKET	3
6	GEN/CR5-12-06	ROTOR COMP.	1
7	GEN/CR5-12-07	BODY ASSY.,STARTING CLUTCH	1
8	GEN/CR5/200-12-08	GENERATOR ASSY.	1
9	GEN/CR5-12-09	ROTOR COMP.	1

**ฝาครอบเครื่องข้างซ้าย (COVER COMP.,LEFT CRANKCASE)**

GEN - 13

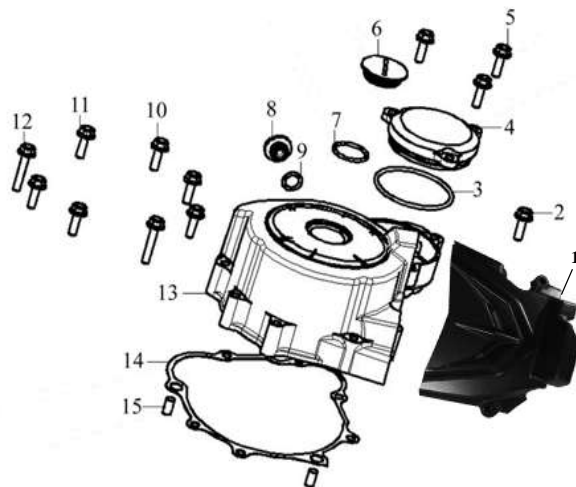
รูปภาพชิ้นส่วน

NO.

PART NO.

ENGLISH DESCRIPTION

Qty.  
(Piece)



1	GEN/CR5-13-01	COVER COMP.,LEFT REAR	1
2	GEN/CR5-13-02	BOLT,HEXAGON FLANGE	2
3	GEN/CR5-13-03	RING,SEAL	1
4	GEN/CR5-13-04	COVER,GEAR CHAMBER	1
5	GEN/CR5-13-05	BOLT,HEXAGON FLANGE	3
6	GEN/CR5-13-06	COVER,LEFT DECORATING	1
7	GEN/CR5-13-07	RING,SEAL	1
8	GEN/CR5-13-08	COVER,INSPECTION	1
9	GEN/CR5-13-09	RING,SEAL	1
10	GEN/CR5-13-10	BOLT,HEXAGON FLANGE	1
11	GEN/CR5-13-11	BOLT,HEXAGON FLANGE	5
12	GEN/CR5-13-12	BOLT,HEXAGON FLANGE	2
13	GEN/CR5-13-13	COVER COMP.,LEFT FRONT	1
14	GEN/CR5-13-14	GASKET,LEFT FRONT COVER	1
15	GEN/CR5-13-15	PIN,DOWEL	2

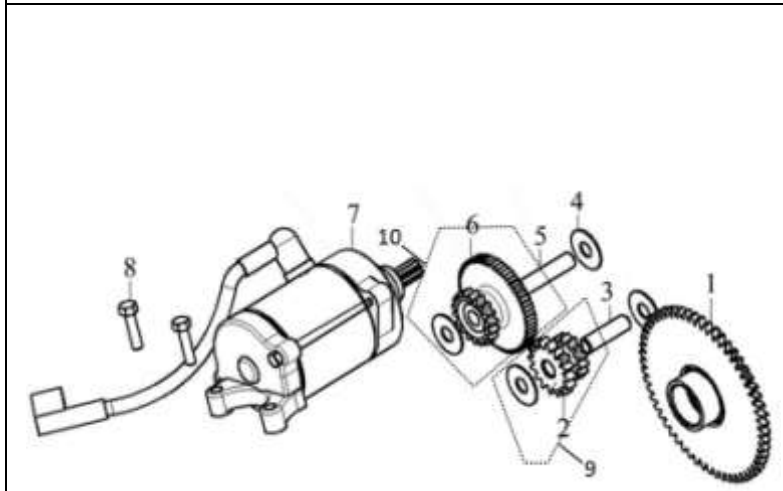
# Frame Parts



## สตาร์ทไฟฟ้า (ELECTRIC STARTER ASSY)

GEN - 14

รูปภาพชิ้นส่วน



NO.	PART NO.	ENGLISH DESCRIPTION	Qty. (Piece)
1	GEN/CR5-14-01	DISK GEAR	1
2	GEN/CR5-14-02	GEAR IDLE,ELECTRIC STARTING	1
3	GEN/CR5-14-03	SHAFT ASSY.,DUPLEX GEAR	1
4	GEN/CR5-14-04	CHECK RING,SHOULDER	4
5	GEN/CR5-14-05	SHAFT ASSY.,DUPLEX GEAR	1
6	GEN/CR5-14-06	DUPLEX GEAR,ELECTRIC STARTING	1
7	GEN/CR5-14-07	MOTOR ASSY.,STARTING	1
8	GEN/CR5-14-08	BOLT,HEXAGON FLANGE	2
9	GEN/CR5-14-09	GEAR IDLE,ELECTRIC STARTING W/H SHAFT	1
10	GEN/CR5-14-10	DUPLEX GEAR,ELECTRIC STARTING W/H SHAFT	1

**โช้คอัพหน้า แพงคอค แคนคอค (FRONT SHOCK, STEERING)**

GEN - 15

รูปภาพชิ้นส่วน

NO.	PART NO.	ENGLISH DESCRIPTION	Qty.(ชิ้น)
1	GEN-15-01	STICKER	2
2	GEN-15-02	SHOCK ABSORBER.,RIGHT FRONT	1
3	GEN-15-03	SHOCK ABSORBER.,FRONT	1
4	GEN-15-04	CAP, STEERING HANDLEBAR	4
5	GEN-15-05	HOLDER,STEERING HANDLE PIPE	1
6	GEN-15-06	PLATE, CONNECTING UPPER	1
7	GEN-15-07	STEERING STEM ASSY.	1
8	GEN-15-08	BEARING,STEERING STEM	1
9	GEN-15-09	ACCESSROIES,STEERING STEM	1
10	GEN-15-10	CAP	1



### สวิงอาร์ม โช๊คหลัง (SWING ARM, REAR SHOCK)

GEN - 16

รูปภาพชิ้นส่วน	NO.	PART NO.	ENGLISH DESCRIPTION	Qty.(ชิ้น)
	1	GEN-16-01	REAR FORK	1
	2	GEN-16-02	STUD	1
	3	GEN-16-03	DUST COVER	4
	4	GEN-16-04	CHAIN BOX	1
	5	GEN-16-05-TH	REAR SHOCK ABSORBER	1
	6	GEN-16-06	REAR CRADLE COMP	1
	7	GEN-16-07-TH	CHAIN	1
	8	GEN-16-08	CHAIN BOX	1
	9	GEN-16-09	ADJUSTER,DRIVE CHAIN LEFT	2
	10	GEN-16-10	STOPPER, CHAIN ADJUSTER	2
	11	GEN-16-11	CRADLE COMP.,REAR	1

**เบาะ (SEAT)**

GEN - 17

รูปภาพชิ้นส่วน

NO.

PART NO.

ENGLISH DESCRIPTION

Qty.(ชิ้น)

1

GEN-17-01

SEAT,DRIVER

1

2

GEN-17-02

CABLE,SEAT

1

3

GEN-17-03

BACKREST


1





## ไฟส่องสว่าง (LIGHTING )

GEN - 18

รูปภาพชิ้นส่วน	NO.	PART NO.	ENGLISH DESCRIPTION	Qty.(ชิ้น)
	1	GEN-18-01	LIGHT ASSY.,HEAD (GATO)	1
	2	GEN-18-02	BULB,HEADLIGHT	1
	3	GEN-18-03	RIGHT DECORATING PLATE,LIGHT ASSY	1
	4	GEN-18-04	LEFT DECORATING PLATE,LIGHT ASSY	1
	5	GEN-18-05	CASE,HEAD LIGHT	1
	6	GEN-18-06	BACK BOARD, FRONT LIGHT	1
	7	GEN-18-07	CASE, METER	1
	8	GEN-18-08	METER ASSY.	1
	9	GEN-18-09	LIGHT, RIGHT FRONT TURNING	1
	10	GEN-18-10	LIGHT, LEFT FRONT TURNING	1
	11	GEN-18-11	LIGHT, RIGHT REAR TURNING	1
	12	GEN-18-12	LIGHT, LEFT REAR TURNING	1
	13	GEN-18-13	REAR REFLECTOR	1
	14	GEN-18-14	TAIL LIGHT	1
	15	GEN-18-15	LIGHT,REAR REGISTRATION PLATE	1

โครงสร้าง (FRAME)				GEN - 19
รูปภาพชิ้นส่วน	NO.	PART NO.	ENGLISH DESCRIPTION	Qty.(ชิ้น)
	1	GEN-19-01	FRAME ASSY.	1
	2	GEN-19-02	PLATE,RIGHT UPPER ENGINE HANGER	1
	3	GEN-19-03	PLATE, UPPER ENGINE HANGER	1
	4	GEN-19-04	CLAMP,WIRE	2
	5	GEN-19-05	LINK BLOCK,HEAD LIGHT BRACKET	1
	6	GEN-19-06	LINK BLOCK,RIGHT HEAD LIGHT BRACKET	1
	7	GEN-19-07	BRACKET,HEAD LIGHT	1
	8	GEN-19-08	PLATE,HEAD LIGHT BRACKET CONNECTING	1
	9	GEN-19-09	CLIP,HEAD LIGHT	2
	10	GEN-19-10	BRACKET	1
	11	GEN-19-11	ENGINE FRONT CONNECTING PLATE	1
	12	GEN-19-12	BOLT,ENGINE HANGER	1
	13	GEN-19-13	BOLT,ENGINE HANGER	3
	14	GEN-19-14	BOLT,ENGINE HANGER	1
	15	GEN-19-15	BOLT,ENGINE HANGER	3
	16	GEN-19-16	BOLT,ENGINE HANGER	2
	17	GEN-19-17	BOLT,ENGINE HANGER	2
	18	GEN-19-18	BOLT,ENGINE HANGER	2

สายไฟหลัก อุปกรณ์ไฟฟ้า ( MAIN CABLE, ELECTRICAL )

GEN - 20

รูปภาพชิ้นส่วน	NO.	PART NO.	ENGLISH DESCRIPTION	Qty.(ชิ้น)
	1	GEN-20-01-TH	HARNESS,WIRE	1
	2	GEN-20-02-TH	ALTHORN	1
	3	GEN-20-03-TH	SACKBUT	1
	4	GEN-20-04	UNIT ASSY.,C.D.I.	1
	5	GEN-20-05	RECTIFIER REGULATE ASSY.	1
	6	GEN-20-06	IGNITION COIL	1
	7	GEN-20-07	CAP,SPARK PLUG	1
	8	GEN-20-08	START RELAY	1
	9	GEN-20-09	FLASHER	1
	10	GEN-20-10-TH	BATTERY ASSY.	1
	11	GEN-20-11	BAND,BATTERY	1
	12	GEN-20-12	BATTERY GASKET	2
	13	GEN-20-13	BATTERY GASKET	1

**ท่อไอเสีย ( MUFFLER ASSY )**

GEN - 21

รูปภาพชิ้นส่วน

NO.

PART NO.

ENGLISH DESCRIPTION


Qty.(ชิ้น)

1	GEN-21-01-TH	MUFFLER ASSY..EXHAUST	1
2	GEN-21-02	MUFFLER BODY	1
3	GEN-21-03	MUFFLER BODY	1
4	GEN-21-04	SHIELD,MUFFLER	1



**คาร์บูเรเตอร์ กรองอากาศ รังผึ้ง (CARBURATOR, AIR CLEANER, RADIATOR)**

GEN - 22

รูปภาพชิ้นส่วน	NO.	PART NO.	ENGLISH DESCRIPTION	Qty.(ชิ้น)
	1	GEN-22-01	AIR CLEANER ASSY.	1
	2	GEN-22-02	ELEMENT,AIR CLEANER	1
	3	GEN-22-03	RADIATOR COMP.	1
	4	GEN-22-04	PIPE,OIL COOLER I	1
	5	GEN-22-05	PIPE,OIL COOLER II	1
	6	GEN-22-06	VALVE,SECONDARY AIR INTAKE	1
	7	GEN-22-07	TUBE,BREATHER	1
	8	GEN-22-08	TUBE,BREATHER	1
	9	GEN-22-09	TUBE,BREATHER	1
	10	GEN-22-10	CARBURETOR ASSY.	1

ถังน้ำมัน (TANK)

GEN - 23


รูปภาพชิ้นส่วน



NO.	PART NO.	ENGLISH DESCRIPTION	Qty.(ชิ้น)
1	GEN-23-01-01	FUEL TANK BODY, RED	1
	GEN-23-01-02	FUEL TANK BODY, WHITE	1
	GEN-23-01-03	FUEL TANK BODY, GREY	1
	GEN-23-01-04	FUEL TANK BODY, GREEN	1
2	GEN-23-02	RUBBER JACKET,FUEL TANK PROP	2
3	GEN-23-03	LEFT FUEL TANK TRIM COVER	1
4	GEN-23-04	RIGHT FUEL TANK TRIM COVER	1
5	GEN-23-05	SWITCH ASSY., FUEL	1
6	GEN-23-06	FUEL SENSOR	1
7	GEN-23-07	PAD,FUEL TANK CUSHION	2
8	GEN-23-08	PAD, COVER FUEL TANK	1
9	GEN-23-09	COVER,FUEL TANK UPPER DECORATIVE	1
10	GEN-23-10	PAD, COVER FUEL TANK	1
11	GEN-23-11	PAD, COVER FUEL TANK	1
12	GEN-23-12	FUEL TANK COVER PLATE	1
13	GEN-23-13	PAD, COVER FUEL TANK	1

บังคับเลี้ยว ( HANDLE BAR ,REAR MIRROR )

GEN - 24

รูปภาพชิ้นส่วน	NO.	PART NO.	ENGLISH DESCRIPTION	Qty.(ชิ้น)	
	1	GEN-24-01	LOCK KIT	1	
	5	GEN-24-05	PLATE, FUEL TANK DECORATED (SEAT LOCK COVER)	1	
	6	GEN-24-06	CLUTH LEVER COMP.	1	
	7	GEN-24-07	SLEEVE, HANDLE RUBBER	1	
	8	GEN-24-08	THROTTLE PARTS	1	
	9	GEN-24-09	WEIGHT,LEFT HANDLE	2	
	10	GEN-24-10	PIPE COMP.,STEERING HANDLE	1	
	11	GEN-24-11	LEFT SWITCH ASSY.	1	
	12	GEN-24-12	RIGHT SWITCH ASSY.	1	
	13	GEN-24-13	I-SHAPED RUBBER RING	1	
	14	GEN-24-14	COVER,CLUTH CABLE	1	
	15	GEN-24-15	CLUTCH CABLE	1	
	16	GEN-24-16	THROTTLE CALBE ASSY.	1	

ล้อหน้า (FRONT WHEEL)				GEN - 25
รูปภาพชิ้นส่วน	NO.	PART NO.	ENGLISH DESCRIPTION	Qty.(ชิ้น)
	1	GEN-25-01-TH	TIRE,FRONT WHEEL	1
	2	GEN-25-02-TH	TUBE,FRONT WHEEL	1
	3	GEN-25-03	FRONT WHEEL	1
	4	GEN-25-04	RIM,FRONT WHEEL	1
	5	GEN-25-05	HUB,FRONT WHEEL	1
	6	GEN-25-06	SPOKE,FRONT WHEEL OUTSIDE	18
	7	GEN-25-07	SPOKE,FRONT WHEEL INSIDE	18
	8	GEN-25-08	BEARING,REAR WHEEL RIGHT	2
	9	GEN-25-09	SHAFT,FRONT WHEEL	1
	10	GEN-25-10	COLLAR	1
	11	GEN-25-11	SPEED COUNTER	1
	12	GEN-25-12	FRONT BRAKE DISK	1
	13	GEN-25-13	RIGHT DISH BRAKE TRAY	1



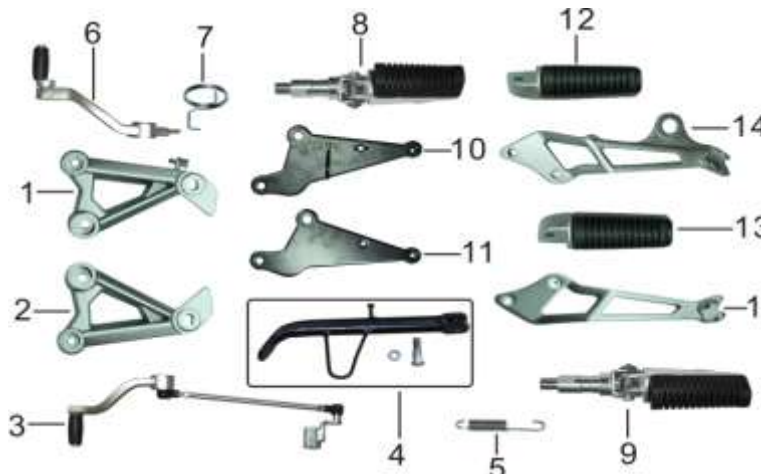
ล้อหลัง (REAR WHEEL)				GEN - 26
รูปภาพชิ้นส่วน	NO.	PART NO.	ENGLISH DESCRIPTION	Qty.(ชิ้น)
	1	GEN-26-01-TH	TIRE,REAR WHEEL	1
	2	GEN-26-02-TH	TUBE,REAR WHEEL	1
	3	GEN-26-03	REAR WHEEL ASSY.	1
	4	GEN-26-04	RIM,REAR WHEEL	1
	5	GEN-26-05	SPOKE,REAR WHEEL OUTSIDE	18
	6	GEN-26-06	SPOKE,REAR WHEEL INSIDE	18
	8	GEN-26-08	BEARING,REAR WHEEL RIGHT	1
	9	GEN-26-09	BEARING,REAR WHEEL RIGHT	1
	10	GEN-26-10	IMPACT DAMPER COMP.	1
	11	GEN-26-11	SPROCKET,FINAL DRIVEN	1
	12	GEN-26-12	BUMPING BLOCK,REAR WHEEL	1
	13	GEN-26-13	SEAT,SPROCKET WHEEL	1
	14	GEN-26-14	REAR WHEEL SHAFT	1
	15	GEN-26-15	COLLAR	1
	16	GEN-26-16	COLLAR 2	1
	17	GEN-26-17	REAR BRAKE DISC	1

เบรคหน้า (FRONT BRAKE)				GEN - 27
รูปภาพชิ้นส่วน	NO.	PART NO.	ENGLISH DESCRIPTION	Qty.(ชิ้น)
<p>The diagram shows the front brake assembly. Callout 1 points to the entire assembly. Callout 2 points to the master cylinder. Callout 3 points to the right disc brake lever. Callout 4 points to the disc brake tube. Callout 5 points to a brake caliper assembly. Callout 6 points to a front disc brake pad component. Callout 7 points to another brake caliper assembly. Two brake pads are shown separately below the callouts.</p>	1	GEN-27-01	DISC-BRAKE ASSY.,FRONT	1
	2	GEN-27-02	CYLINDER ASSY.,MASTER	1
	3	GEN-27-03	LEVER,RIGHT DISC-BRAKE	1
	4	GEN-27-04	DISC-BRAKE TUBE	1
	5	GEN-27-05	CALIPER ASSY.,	1
	6	GEN-27-06	PAD COMP.,FRONT DISC-BRAKE	2
	7	GEN-27-07	CALIPER ASSY.,	1

เบรคหลัง (REAR BRAKE)				GEN - 28	
รูปภาพชิ้นส่วน	NO.	PART NO.	ENGLISH DESCRIPTION	Qty.(ชิ้น)	
	1	GEN-28-01	DISC-BRAKE ASSY.,REAR	1	
	2	GEN-28-02	DOWN DISC BRAKE	1	
	3	GEN-28-03	PAD COMP.,REAR DISC-BRAKE	1	


### คั่นเหยียบ (PILLION STEP & SUPPORT)

GEN - 29

รูปภาพชิ้นส่วน	NO.	PART NO.	ENGLISH DESCRIPTION	Qty.(ชิ้น)
	1	GEN-29-01	ADAPTER PLATE,,PILLION STEP,RIGHT	1
	2	GEN-29-02	ADAPTER PLATE,,PILLION STEP	1
	3	GEN-29-03	PEDAL, SHIFTING	1
	4	GEN-29-04	SIDE SUPPORT	1
	5	GEN-29-05	SPRING,SIDE STAND	1
	6	GEN-29-06	PEDAL,REAR BRAKE	1
	7	GEN-29-07	RETURN SPRING,REAR BRAKE PEDAL	1
	8	GEN-29-08	RIGHT MAIN FOOTREST SADDLE	1
	9	GEN-29-09	MAIN FOOTREST SADDLE	1
	10	GEN-29-10	BRACKET PLATE	1
	11	GEN-29-11	BRACKET PLATE	1
	12	GEN-29-12	STEP ASSY.,RIGHT PILLION	1
	13	GEN-29-13	STEP ASSY.,LEFT PILLION	1
	14	GEN-29-14	ADAPTER PLATE,,PILLION STEP,RIGHT	1
	15	GEN-29-15	ADAPTER PLATE,,PILLION STEP	1

**บังโคลนหน้า กระจก (FRONT FENDER, MIRROR)**

GEN - 30

รูปภาพชิ้นส่วน	NO.	PART NO.	ENGLISH DESCRIPTION	Qty.(ชิ้น)	
	1	GEN-30-01-01	FRONT FENDER, RED	1	
		GEN-30-01-02	FRONT FENDER, WHITE	1	
		GEN-30-01-03	FRONT FENDER, GREY	1	
		GEN-30-01-04	FRONT FENDER, GREEN	1	
	2	GEN-30-02	FRONT FENDER BRACKET	1	
	3	GEN-30-03	FRONT FENDER BRACKET	1	
	4	GEN-30-04	REAR RIGHT BRACKET, FRONT FENDER	1	
	5	GEN-30-05	REAR BRACKET, FRONT FENDER	1	
	6	GEN-30-06	SURROUNDING,NECK RIGHT	1	
	7	GEN-30-07	SURROUNDING,NECK LEFT	1	
	8	GEN-30-08	LEFT REARVIEW MIRROR	1	
	9	GEN-30-09	RIGHT REARVIEW MIRROR	1	

ฝาครอบด้านล่างและท้ายเบาะ (AIR GUIDE SLEEVE LOWER & BACKREST)				GEN - 31	
รูปภาพชิ้นส่วน	NO.	PART NO.	ENGLISH DESCRIPTION	Qty.(ชิ้น)	
	1	GEN-31-01	SHIELD,RADIATOR	1	
	2	GEN-31-02	AIR GUIDE SLEEVE, FRONT LOWER	1	
	3	GEN-31-03-01	AIR GUIDE SLEEVE,RIGHT LOWER	1	
		GEN-31-03-02	AIR GUIDE SLEEVE,RIGHT LOWER	1	
		GEN-31-03-03	AIR GUIDE SLEEVE,RIGHT LOWER	1	
		GEN-31-03-04	AIR GUIDE SLEEVE,RIGHT LOWER	1	
	4	GEN-31-04-01	AIR GUIDE SLEEVE,LEFT LOWER	1	
		GEN-31-04-02	AIR GUIDE SLEEVE,LEFT LOWER	1	
		GEN-31-04-03	AIR GUIDE SLEEVE,LEFT LOWER	1	
		GEN-31-04-04	AIR GUIDE SLEEVE,LEFT LOWER	1	
		5	GEN-31-05	BRACKET,LOWER AIR GUIDE SLEEVE	1
		6	GEN-31-06	PLATE FENDER	1
		7	GEN-31-07-01	CAP,BACKREST DECORATIVE	1
			GEN-31-07-02	CAP,BACKREST DECORATIVE	1
			GEN-31-07-03	CAP,BACKREST DECORATIVE	1
			GEN-31-07-04	CAP,BACKREST DECORATIVE	1

บังโคลนหลัง ฝาครอบข้าง (REAR FENDER & SIDE COVER)

GEN - 32

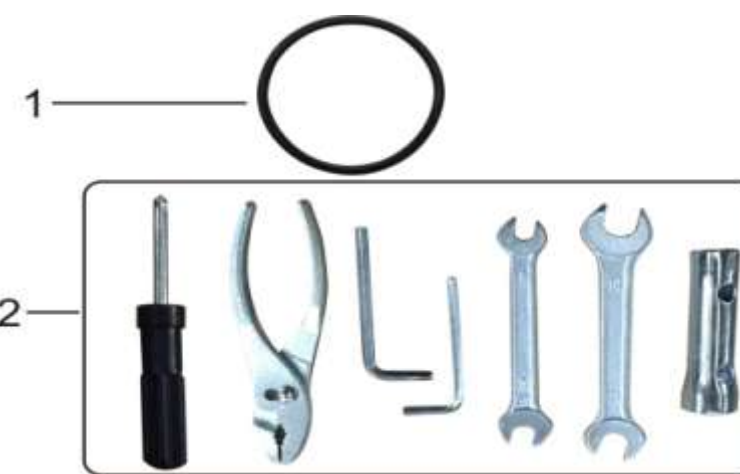
รูปภาพชิ้นส่วน

NO.	PART NO.	ENGLISH DESCRIPTION	Qty.(ชิ้น)
1	GEN-32-01	REAR FENDER	1
2	GEN-32-02	COVER, SIDE COVER	1
3	GEN-32-03	RIGHT AUXILIARY PEDAL ASSY	1
4	GEN-32-04	COVER, SIDE COVER	1
5	GEN-32-05	SIDE COVER,LEFT	1
6	GEN-32-06	PROTECTION PLATE,REAR FENDER	1
7	GEN-32-07	DECORATIVE BLOCK,RIGHT BODY COVER DECORATIVE(RED R5)	1
8	GEN-32-08	DECORATIVE BLOCK,LEFT BODY COVER DECORATIVE(RED R0)	1
9	GEN-32-09	BRACKET,REAR PLATE	1
10	GEN-32-10	LEFT DECORATION	1
11	GEN-32-11	BRACKET,REAR FENDER	1
12	GEN-32-12	LINING,REAR FENDER	1



เครื่องมือประจำรถ (TOOL KIT)

GEN - 33

รูปภาพชิ้นส่วน	NO.	PART NO.	ENGLISH DESCRIPTION	Qty.(ชิ้น)
	1	GEN-33-01	TRUCK TOOL STRAP	2
	2	GEN-33-02	ACCESSORIES,TOOL	1



